

# Gerd Knoll sen. incl. hydraulic excavator

**Shipping areas** international coastal transport RSA20 // with weather limitation up to 1,50 m wave height // Beaufort 5







# Services

- ▶ Dredging
- ▶ Revetment construction
- ▶ Maintenance
- ▶ Pile-driving
- ▶ Cargo vessel for construction site supply
- ▶ Round pipe guidance for exploratory work
- ▶ Optimal use in shallow waters due to shallow draught, loaded 1.46 m, unloaded 0.80 m
- ▶ Working platform incl. hydraulic spuds
- ▶ Working platform for detection of unexploded bombs
- ▶ Transport for offshore industry

# Technical information

## Work vessel Gerd Knoll sen.

**Built in**  
2007

**Built by**  
Kötter Werft GmbH, Haren, Germany

**Rebuilt to offshore vessel in**  
2018

**Rebuilt yard**  
Kötter Werft GmbH, Haren, Germany

**Classification**  
RINA C. special service,  
special navigation

**IMO No.**  
8745905

**Gross tonnage**  
196 GT

**Net tonnage**  
59 NT

**Carrying capacity**  
235.80 t

**Main generator**  
Volvo Penta D16C-AMH 478 kW  
Approval-nr. EIAPP-F-013822-0168

**Emergency generator**  
2 pc. Hatz, type 4L41,  
27 kW by 1.500 rp/min

**Drive**  
2 pc. schottel-drive each 225 kW

**Anchoring spuds hydraulic**  
2 pc. bow and stern  
9.0 m and 15.0 m above water level  
with Turas drive

**Cable winches**  
2 pc. cable winches  
tensile force max. 1.65 t in fourth position

**Nautical equipment**  
radar, Naftex, GPS navigation,  
maritime radio A1, onboard radio (GMDSS A 1)

**Crew**  
Up to 6 persons

**Inflatable life-raft**  
2 pc. each 6 persons

**Fresh water tank**  
3.2 m<sup>3</sup>

**Waste water tank**  
5.9 m<sup>3</sup>

**Fuel tank**  
5.3 m<sup>3</sup>

**Water ballast**  
140 m<sup>3</sup>

## Main dimensions

**Length**  
40.00 m

**Breadth**  
8.60 m

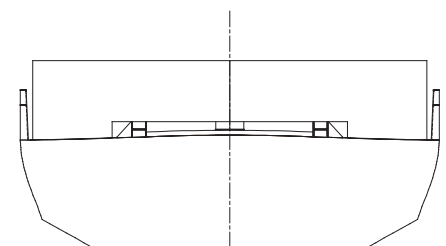
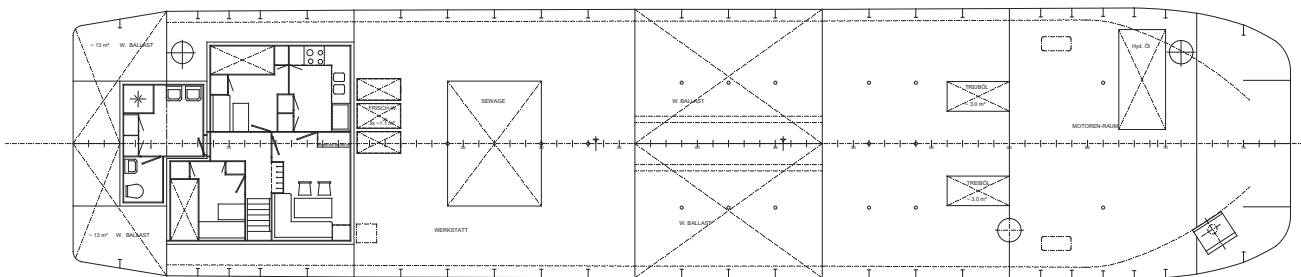
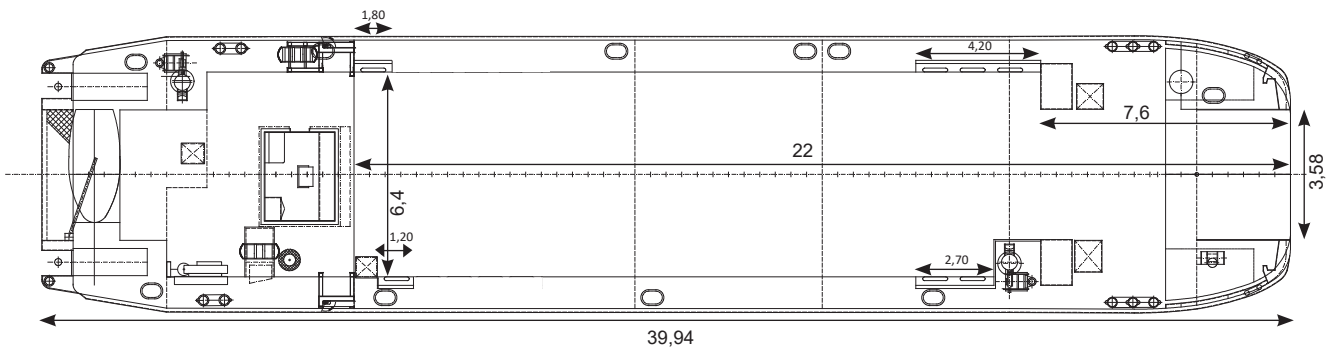
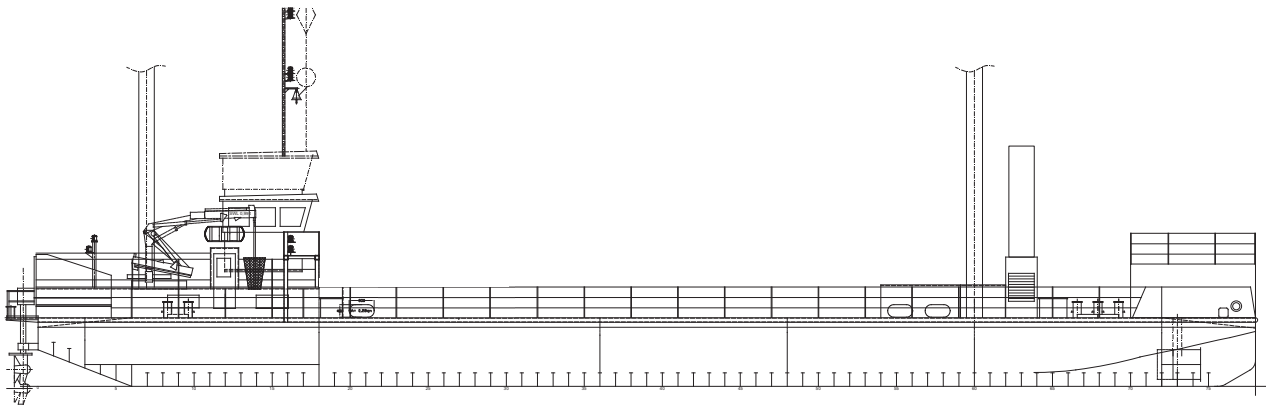
**Depth**  
2.20 m

**Draught unloaded**  
0.80 m

**Draught loaded**  
1.46 m

**Board loading**  
3.00 t/m<sup>2</sup>







# Technical information

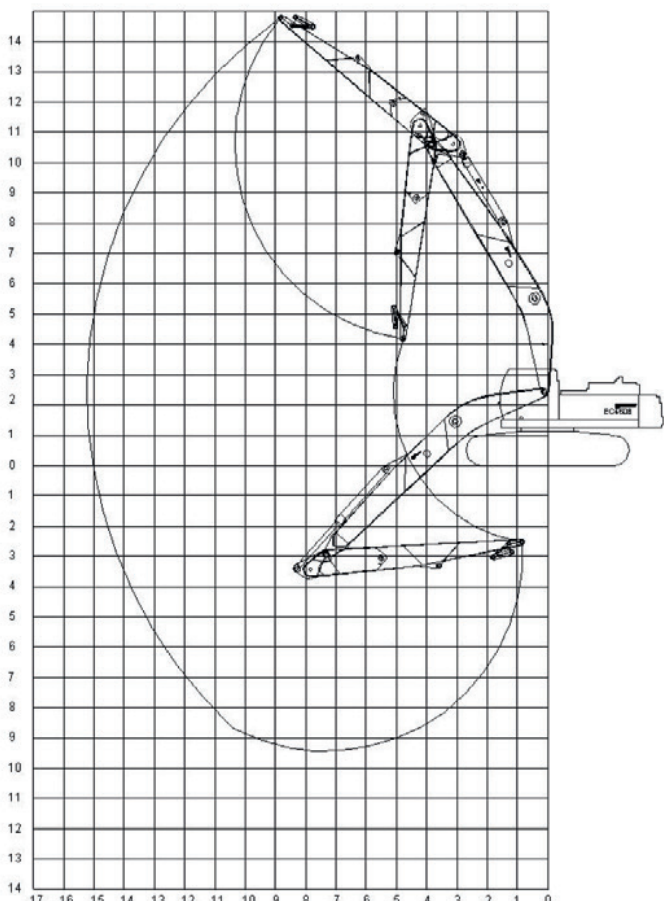
## Hydraulic excavator Volvo EC 460

**Rated output**  
228 kW

**Accessory equipment**  
polygrab 1.25 m<sup>3</sup>  
backhoe bucket 2-3 m<sup>3</sup>  
ditch clearing bucket  
hammer and shears

**GPS control**  
Excavator GPS controlled positioning system  
Prolec PCX 3D ([www.bagger-gps.de](http://www.bagger-gps.de))

**Boom length/depth**  
15.00-18.00 / 8.00-10.00 m  
(see also digging arc)



## ” Digging curve EC 460B

**9 m mono**  
4.900 kg

**6,5 m bucket arm**  
2.215 kg

**Additional counter weight**  
4.500 kg

**Carrying capacity**  
**Diagonally** 2.9 t  
**Along** 4.9 t

**Loads**  
5.5 t

**Operating weight**  
50.6 t



**Knoll GmbH & Co. KG**  
Eichenallee 88  
49733 Haren

tel.: 05934 9304-0  
fax: 05934 9304-60  
wasserbau@knoll-bau.de

[www.knoll-bau.de](http://www.knoll-bau.de)

