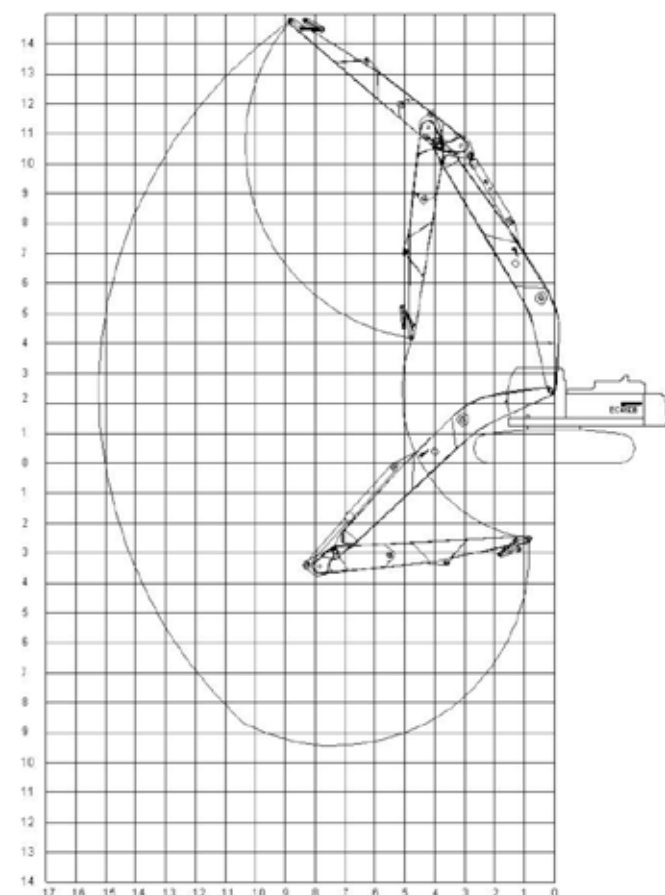




Technical information

Hydraulic crawler excavator
Volvo EC 460



Rated power
228 kW

Attachments
Polygrab 1.25 m³
Backhoe bucket 2-3 m³
Ditch clearing bucket
Hammer and shears

GPS control
Excavator GPS control,
Prolec PCX 3D positioning system
(www.bagger-gps.de)

Outreach/depth
15.00-18.00 / 8.00-10.00 m

” Digging curve EC 460B

9 m mono
4.900 kg

6,5 m dipper stick
2.215 kg

Additional counter weight
4.500 kg

Transverse load capacity
2.9 t

Load capacity longitudinal
4.9 t

Test loads
5.5 t

Operating weight
50.6 t

Knoll GmbH & Co. KG
Eichenallee 88
49733 Haren

tel.: 05934 9304-0
fax: 05934 9304-60
wasserbau@knoll-bau.de

www.knoll-bau.de

Gerd Knoll sen. incl. hydraulic excavator

Shipping areas international coastal transport RSA20 // with weather limitation up to 1,50 m wave height // Beaufort 5





Technical information

Work vessel Gerd Knoll sen.

Year of construction
2007

Shipyard
Kötter Werft GmbH, Haren

Modification to seagoing vessel
2018

Modification shipyard
Kötter Werft GmbH, Haren

Class
RINA C. special service,
special navigation

IMO No.
8745905

Gross tonnage
196 GT

Net tonnage
59 NT

Load capacity
235.80 t

Main Engine
Volvo Penta D16C-AMH 478 kW
Approval-nr. EIAPP-F-013822-0168

Emergency power generator
2 units Hatz, type 4L41,
27 kW at 1.500 rpm

Drive
2 Schottel drives, 225 kW each

Anchor spuds hydraulic
2 pieces bow and stern
9.0 m and 15.0 m from water level
with Turas drive

Cable winches
2 cable winches
Pulling force max. 1.65 t in the 4th layer

Nautical equipment
Radar, Naftex, GPS navigation,
marine radio A1, on-board radio (GMDSS A 1)

Crew
Up to 6 persons

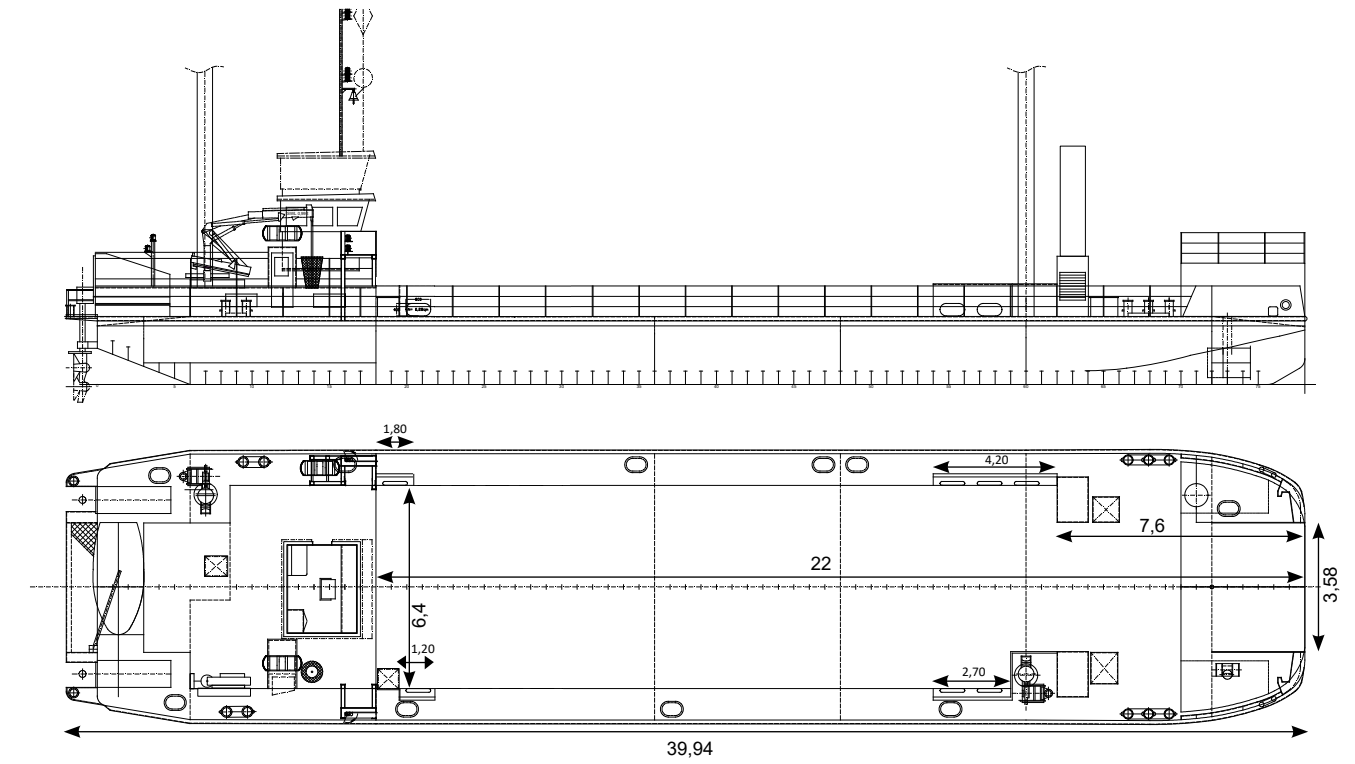
Life rafts
2 pieces for 6 persons each

Fresh water supply
3.2 m³

Waste water tank
5.9 m³

Fuel tank
5.3 m³

Water ballast
140 m³



Main dimensions

Length
40.00 m

Width
8.60 m

Draught empty
0.80 m

Draft loaded
1.46 m

Deck loading
3.00 t/m²

Services

- ▶ Dredging
- ▶ Revetment construction
- ▶ Maintenance
- ▶ Pile-driving
- ▶ Cargo vessel for construction site supply
- ▶ Round pipe guidance for exploratory work
- ▶ Optimal use in shallow waters due to shallow draught, loaded 1.46 m, unloaded 0.80 m
- ▶ Working platform incl. hydraulic spuds
- ▶ Working platform for detection of unexploded bombs
- ▶ Transport for offshore industry